

**driade** s.p.a. Via Padana Inferiore 12 cap. 29012 Fossadello di Caorso (PC) Italy  
www.driade.com t. +39 0523 818618 f. +39 0523 822628 e-mail: com.it@driade.com

**driade**

*New proposals April 2007*



# driade

*New proposals April 2007*

## ALPHABETICAL INDEX

BIRDS	<i>rug</i>	<i>p. 34-35</i>
FRAME	<i>bookcase</i>	<i>p. 12, 14</i>
FRAME	<i>table</i>	<i>p. 13, 15</i>
KOISHI	<i>pouf</i>	<i>p. 16-17</i>
LIBA	<i>small armchair</i>	<i>p. 28</i>
LUCAS	<i>small armchair</i>	<i>p. 29</i>
MELAINA	<i>small armchair</i>	<i>p. 32</i>
MERAN	<i>armchair</i>	<i>p. 19</i>
MISS LACY	<i>small armchair</i>	<i>p. 4-5</i>
MONSEIGNEUR	<i>small armchair</i>	<i>p. 6-7</i>
MOORE	<i>armchair</i>	<i>p. 8-11</i>
ORSA	<i>armchair</i>	<i>p. 22</i>
ORSA	<i>chaise longue</i>	<i>p. 24</i>
ORSA	<i>sofa</i>	<i>p. 23</i>
S. MARCO	<i>small armchair</i>	<i>p. 18</i>
SUKI	<i>armchair</i>	<i>p. 27</i>
TABULA MAGNA	<i>table</i>	<i>p. 30-31</i>
VIGILIUS	<i>small armchair</i>	<i>p. 20</i>
VIGILIUS	<i>sofa</i>	<i>p. 21</i>

*Art direction Adelaide Acerbi, computer graphic Artur Dudka  
photographs Claudio Tajoli and Tom Vack, editorial coordination Francesca Sanvito  
page text films Repro's, printed by Mondadori Spa, April 2007*

## MISS LACY

by Philippe Starck

Small armchair with body in cast stainless steel with floral pattern and legs in stainless steel.

For indoor use only. W.58 D.58 H.77; seat H.44,5.



## MONSEIGNEUR

by Philippe Starck

Small armchair with front legs/armrests in cast stainless steel and back legs in mahogany. Seat and back in polyurethane foam with fixed full grain leather cover available in three colour versions:

black (with legs in ebonized mahogany), beige and brown (with legs in natural mahogany).  
For indoor use only. W.53,4 D.56,5 H.88; seat H.47; arms H.67.

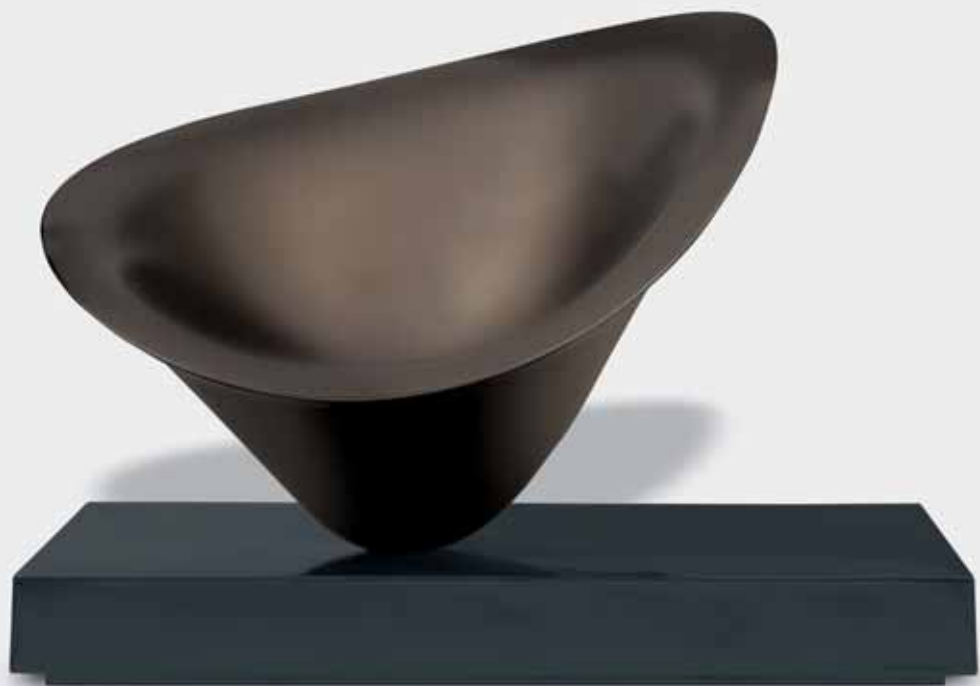


## MOORE

by Philippe Starck

Armchair with base and swivel seat in laquered nylon available in three versions: base and seat in opaque metallic bronze coloured nylon; base in lead-coloured nylon and seat in opaque metallic bronze coloured nylon; base and seat in glossy white. For indoor and outdoor use.

W.129,5 D.101 H.91; seat H.45,8.



MOORE  
*by Philippe Starck*



## FRAME

by Philippe Starck

Bookcase/mirror with frame in solid natural mahogany and swivel shelves with printed image on mirrored glass. For indoor use only. W.114 D.26/44,5 H.200.

Numbered edition.



## FRAME

by Philippe Starck

Table with structure in solid natural mahogany and rectangular top with printed image on tempered extra-clear glass. For indoor use only. W.160 D.80 - W.180/210 D.90 H.72.



## FRAME

*by Philippe Starck*

*Bookcase/mirror with frame in solid natural mahogany and swivel shelves in mirrored glass.*

*For indoor use only. W.114 D.26/44,5 H.200.*

Numbered edition.



## FRAME

*by Philippe Starck*

*Table with structure in natural mahogany and rectangular top in tempered extra-clear glass.*

*For indoor use only. W.160 D.80 - W.180/210 D.90 H.72.*



## KOISHI

by Naoto Fukasawa

*Pouf with structure in painted fibreglass, available in three colour versions: white, orange and blue. For indoor use only. W.114 D.90 H.38.*



## S. MARCO

*by Matteo Thun & Antonio Rodriguez*

*Small armchair. Seat and back with padding in polyurethane foam and cotton wool and metal frame. Legs in ebonized beechwood and fixed cover in leather or velvet. Trim in leather. For indoor use only. W.43 D.56 H.90; seat H.45.*



## MERAN

*by Matteo Thun & Antonio Rodriguez*

*Armchair in foamed monobloc, feet in ebonized beechwood and fixed cover in leather or velvet. Trim in leather. For indoor use only. W.81 D.88 H.76,5; seat H.40; arms H.53,5.*



## VIGILIUS

*by Matteo Thun & Antonio Rodriguez*

*Small armchair with wooden structure with belts, padding in polyurethane foam and cotton wool. Feet in ebonized beechwood and fixed cover in leather or velvet. Trim in leather.*

*For indoor use only. W.75 D.83 H.76,5; seat H.40; arms H.54.*



## VIGILIUS

*by Matteo Thun & Antonio Rodriguez*

*Two seater sofa with wooden structure with belts, padding in polyurethane foam and cotton wool. Feet in ebonized beechwood and fixed cover in leather or velvet. Trim in leather.*

*For indoor use only. W.123 D.83 H.76,5; seat H.40; arms H.54.*



## ORSA

*by Rodolfo Dordoni*

*Armchair with wooden structure with belts, padding in polyurethane foam and cotton wool, pillows in polyester fibre (rollofil). Removable cover in various fabrics and feet in black coloured ABS. W.100 D.100 H.78; seat H.39; arms H.50.*



## ORSA

*by Rodolfo Dordoni*

*Two- or three-seater sofa with wooden structure with belts, padding in polyurethane foam and cotton wool, pillows in polyester fibre (rollofil). Removable cover in various fabrics and feet in black coloured ABS. Two-seater: W.167,5 D.100 H.78; seat H.39; arms H.50; three-seater W.234,5 D.100 H.78; seat H.39; arms H.50.*



## ORSA

*by Rodolfo Dordoni*

*Chaise longue right and left, two-cushion seat element right and left with wooden structure with belts, padding in polyurethane foam and cotton wool, pillows in polyester fibre (rollofil). Removable cover in various fabrics and feet in black coloured ABS. W.84 D.157 H.78; seat H.39; arms H.50.*



## SUKI

by Toyo Ito

Armchair with frame in satin-finished stainless steel tube and seat in perforated stainless steel sheet. For indoor use only. W.94 D.102 H.110; seat H.35.

Numbered edition.



## LIBA

by Borek Sipek

Small armchair with seat and back in rattan covered in red, black or natural-coloured cane.  
Front legs in wood. For indoor use only. W.66 D.60 H.91; seat H.44.



## LUCAS

by Oscar Tusquets

Small armchair with frame in polished cast aluminium. Armrests in shaped steel, covered in red hide. Seat and back in steel tube with padding in polyurethane foam. Fixed cover in red wool mohair velvet. For indoor use only. W.60 D.56 H.81; seat H.47.



## TABULA MAGNA

by Oscar Tusquets

Table with structure and legs in massive wenge wood, top in multilayered wood with wenge veneer, edges in massive cherry wood. Sliding top in multilayered wood with rails in massive wood, central legs with adjustable height. Indoor use only. W.151/282 D.120 H.73.5.



## MELAINA

*by Rodolfo Bonetto*

*Small monobloc armchair in amaranth-coloured in fibreglass. For indoor use only.*

*W. 70 D. 67 H. 70; seat H. 40.*



# BIRDS

by Ed Annink

Rug in pure virgin wool. Hand "tufted". W.300 D.200.

